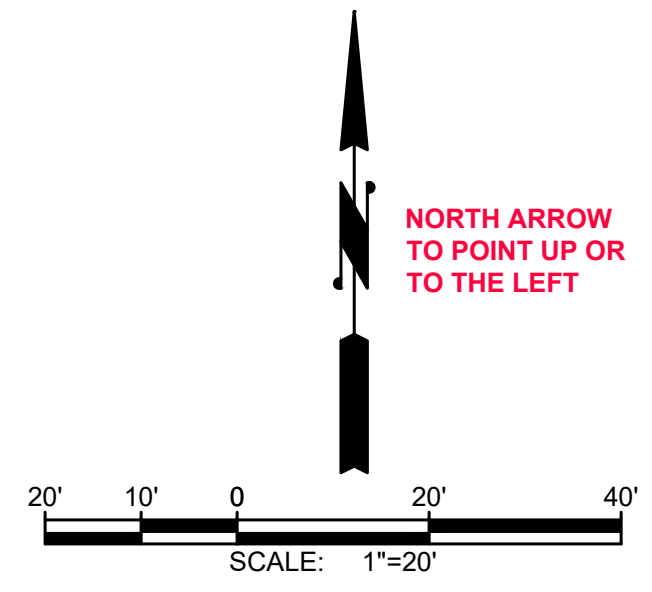
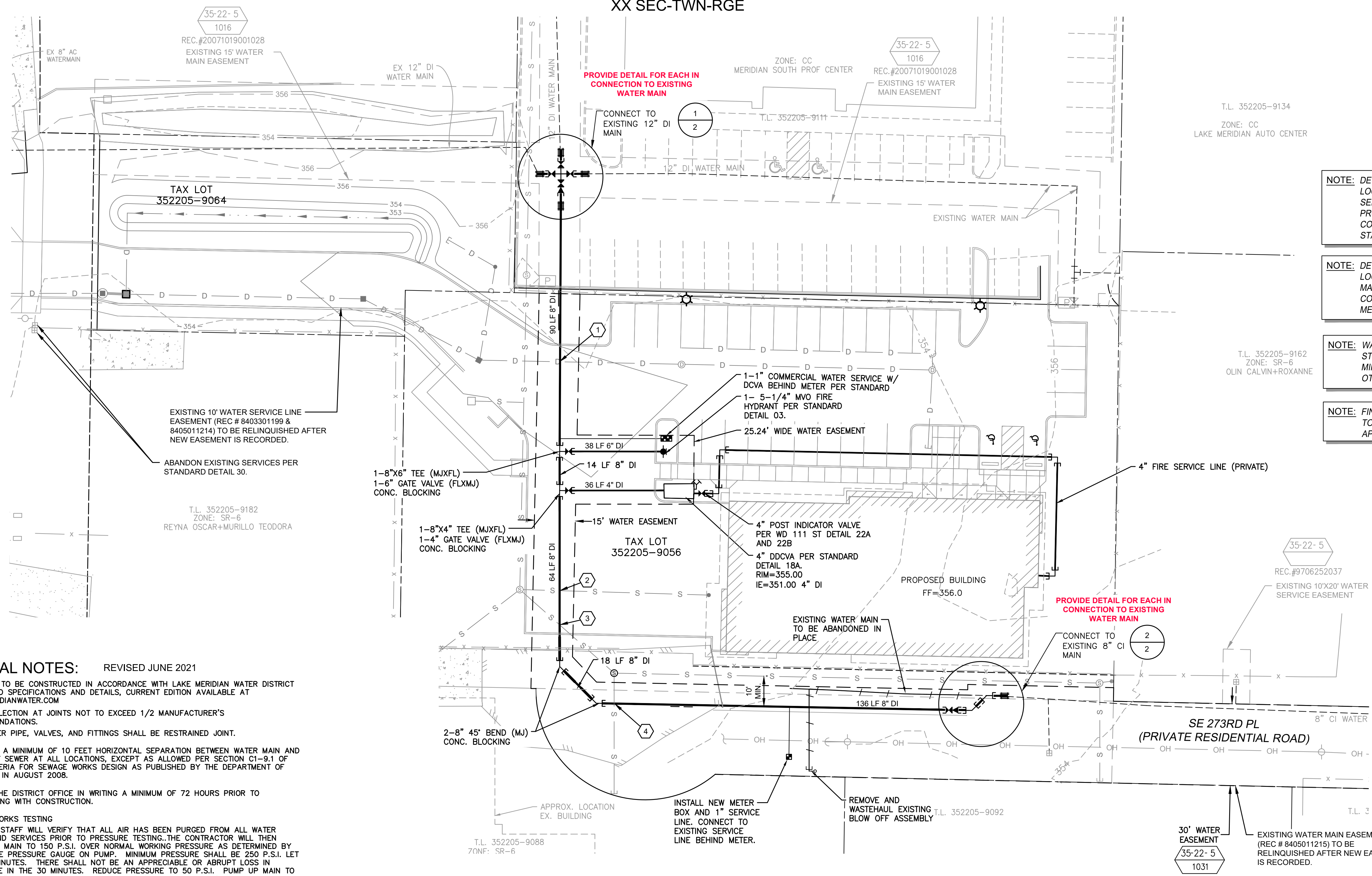
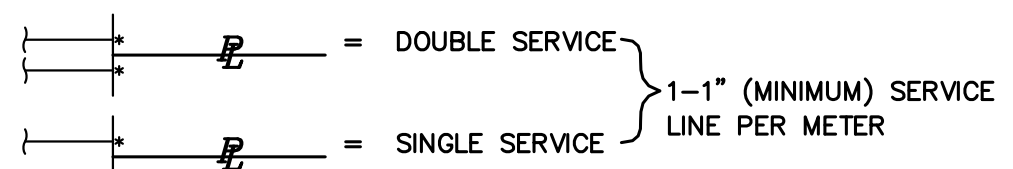


XX SEC-TWN-RGE

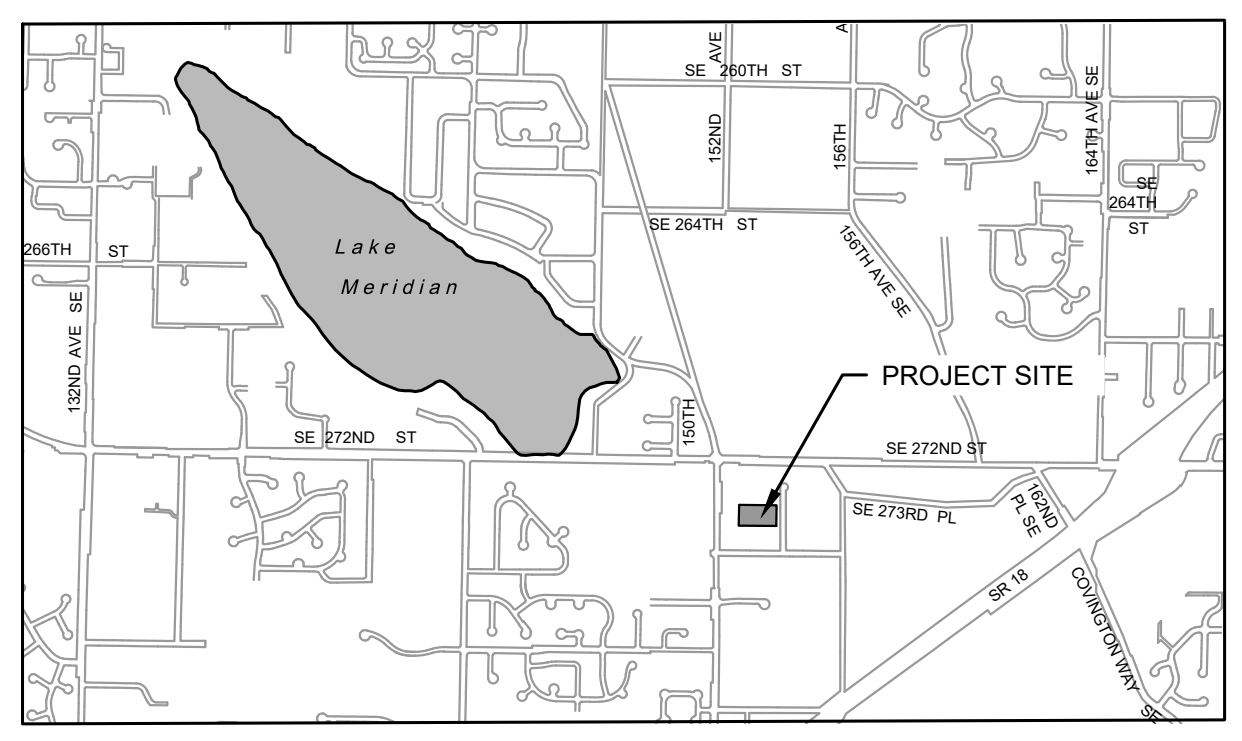


- NOTE: DEVELOPER/CONTRACTOR TO VERIFY LOCATION OF ANY EXISTING WATER SERVICE LINES & METERS TO THE PROJECT PROPERTY PRIOR TO CONSTRUCTION. ABANDON PER STANDARD DETAIL 30
- NOTE: DEVELOPER/CONTRACTOR TO VERIFY LOCATION, DEPTH, & TYPE OF EX. WATER MAIN PRIOR TO THE START OF CONSTRUCTION. COORDINATE WITH LAKE MERIDIAN WATER DISTRICT.
- NOTE: WATER MAIN TO BE INSTALLED BELOW STORM SEWERS W/ ETHAFOAM PAD AND MIN. 6" VERTICAL SEPARATION UNLESS OTHERWISE NOTED.
- NOTE: FINAL FIRE HYDRANT LOCATION SUBJECT TO FIRE MARSHAL PERMIT REVIEW AND APPROVAL

- GENERAL NOTES:** REVISED JUNE 2021
1. PROJECT TO BE CONSTRUCTED IN ACCORDANCE WITH LAKE MERIDIAN WATER DISTRICT STANDARD SPECIFICATIONS AND DETAILS, CURRENT EDITION AVAILABLE AT LAKEMERIDIANWATER.COM
  2. PIPE DEFLECTION AT JOINTS NOT TO EXCEED 1/2 MANUFACTURER'S RECOMMENDATIONS.
  3. ALL WATER PIPE, VALVES, AND FITTINGS SHALL BE RESTRAINED JOINT.
  4. MAINTAIN A MINIMUM OF 10 FEET HORIZONTAL SEPARATION BETWEEN WATER MAIN AND SANITARY SEWER AT ALL LOCATIONS, EXCEPT AS ALLOWED PER SECTION CI-9.1 OF THE CRITERIA FOR SEWAGE WORKS DESIGN AS PUBLISHED BY THE DEPARTMENT OF ECOLOGY IN AUGUST 2008.
  5. NOTIFY THE DISTRICT OFFICE IN WRITING A MINIMUM OF 72 HOURS PRIOR TO PROCEEDING WITH CONSTRUCTION.
  6. WATER WORKS TESTING  
DISTRICT STAFF WILL VERIFY THAT ALL AIR HAS BEEN PURGED FROM ALL WATER MAINS AND SERVICES PRIOR TO PRESSURE TESTING. THE CONTRACTOR WILL THEN PUMP UP MAIN TO 150 P.S.I. OVER NORMAL WORKING PRESSURE AS DETERMINED BY ACCURATE PRESSURE GAUGE ON PUMP. MINIMUM PRESSURE SHALL BE 250 P.S.I. LET SIT 30 MINUTES. THERE SHALL NOT BE AN APPRECIABLE OR ABRUPT LOSS IN PRESSURE IN THE 30 MINUTES. REDUCE PRESSURE TO 50 P.S.I. PUMP UP MAIN TO "REQUIRED" PRESSURE AND TEST FOR TEN (10) MORE MINUTES. (CONTRACTOR TESTING GAUGE MAY BE COMPARED TO DISTRICT PRESSURE GAUGE FOR ACCURACY)
  7. PRIOR TO CALLING OUT THE DISTRICT TO WITNESS THE PRESSURE TEST, THE CONTRACTOR SHALL HAVE ALL EQUIPMENT SET UP AND COMPLETELY READY FOR TESTING.
  8. THE CONTRACTOR SHALL NOT OPERATE ANY GATE VALVES OR MAKE ANY CONNECTIONS TO THE EXISTING WATER SYSTEM WITHOUT PRIOR WRITTEN APPROVAL FROM THE DISTRICT INSPECTOR OR SUPERINTENDENT.
  9. WATER SERVICE LOCATIONS ARE SHOWN AT APPROXIMATE LOCATION ONLY. ALL FINAL LOCATIONS SHALL BE FIELD STAKED BY THE DEVELOPER'S ENGINEER AND THEN COORDINATED AND FIELD VERIFIED WITH THE DISTRICT INSPECTOR OR SUPERINTENDENT PRIOR TO INSTALLATION. ALL TAPS TO THE WATERMAIN SHALL BE MADE AT THE SAME HORIZONTAL STATION ALONG THE PIPE THAT THE METER IS PLACED UNLESS OTHER ARRANGEMENTS ARE MADE WITH THE DISTRICT.
  10. AFTER CLEARING AND A MINIMUM OF 4 WEEKS PRIOR TO WATERLINE INSTALLATION, THE DEVELOPER OR CONTRACTOR SHALL COORDINATE WITH THE DISTRICT SO THAT SOILS TESTING CAN BE COMPLETED BY THE CONTRACTOR, IF DETERMINED NECESSARY BY THE DISTRICT.
  11. THE CONTRACTOR SHALL CUBE THE NEW WATER MAIN PRIOR TO FLUSHING AND TESTING THE NEW WATER MAIN. A REPRESENTATIVE OF THE DISTRICT SHALL BE PRESENT TO WITNESS THE CUBING PROCESS. THE DISTRICT SHALL FURNISH FOAM CUBES AND THE CONTRACTOR SHALL COORDINATE WITH THE DISTRICT AND RESIDENT PROJECT REPRESENTATIVE FOR CUBING LOCATIONS. IF A CUBE GETS STUCK INSIDE WATER MAIN, THE CONTRACTOR SHALL LOCATE AND REMOVE CUBE AND ANY OBSTRUCTIONS. THE CUBING PROCESS SHALL THEN BE REPEATED UNTIL THE ENTIRE LINE HAS BEEN SUCCESSFULLY CUBED. THE CONTRACTOR SHALL THEN SUCCESSFULLY FLUSH AND TEST THE NEW WATER MAIN FOR PRESSURE AND PURITY. THE PROCESS SHALL BE REPEATED UNTIL THE NEW WATER MAIN HAS BEEN SUCCESSFULLY CUBED, FLUSHED AND TESTED. THE DISTRICT SHALL BE RESPONSIBLE FOR COLLECTING PURITY SAMPLES AND OBTAINING BACTERIOLOGICAL TEST RESULTS. HOWEVER, THE CONTRACTOR IS RESPONSIBLE FOR SATISFACTORY SAMPLES. THE DISTRICT WILL PAY FOR THE FIRST SET OF SAMPLES BUT ANY REPEAT SAMPLING DUE TO FAILURE WILL BE THE RESPONSIBILITY OF THE CONTRACTOR.
  12. EXISTING WATER SERVICES, IF PRESENT, SHALL BE ABANDONED PER STANDARD DETAIL 30.
  13. EXISTING DRINKING WATER WELLS, IF PRESENT, SHALL BE DECOMMISSIONED IN ACCORDANCE WITH WAC 173-160-381.
  14. EXISTING SEPTIC TANKS, IF PRESENT, SHALL BE DECOMMISSIONED IN ACCORDANCE WITH ALL STATE AND LOCAL STANDARDS.



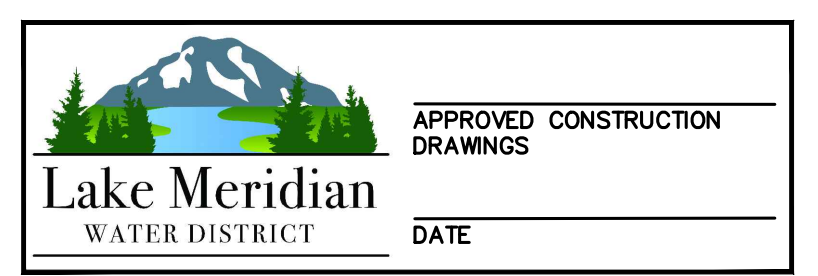
DOUBLE SERVICES SHALL NOT BE LOCATED WHERE THERE WILL BE CONFLICTS WITH OTHER UTILITY BOXES. ANY CHANGES TO THE DESIGN LOCATIONS SHALL BE APPROVED BY DISTRICT MANAGER OR SUPERINTENDENT PRIOR TO INSTALLATION.



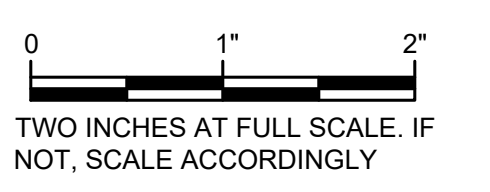
VICINITY MAP

SHEET INDEX	
SHT NO.	DESCRIPTION
1	WATER MAIN PLAN AND NOTES
2	WATER MAIN CONNECTION DETAILS
3	WATER DETAILS

DATUM: NAVD 88



WATER MAIN CROSSINGS	
1	8" SD IE= 349.85 8" W T/P= 349.35
2	8" W IE=350.10 8" SS T/P= 345.70
3	8" W IE=350.00 8" SS T/P= 346.05
4	8" W IE=350.00 8" SS T/P=346.30

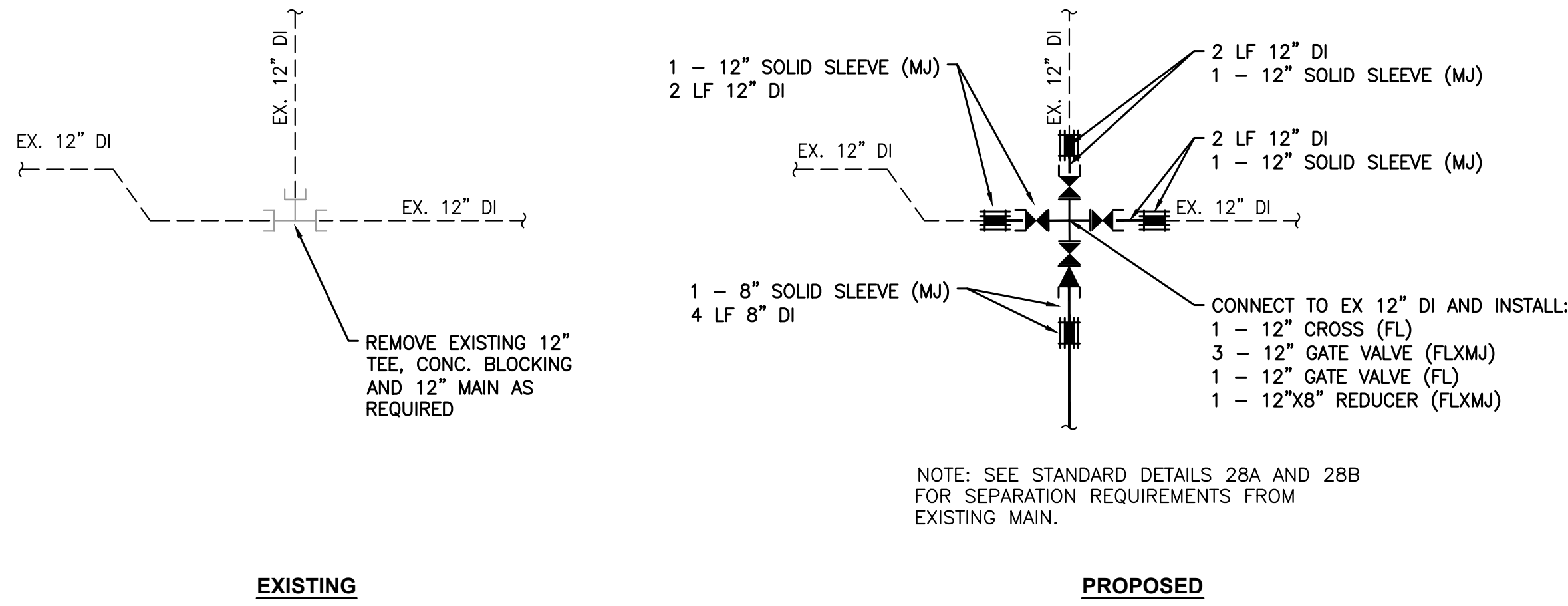
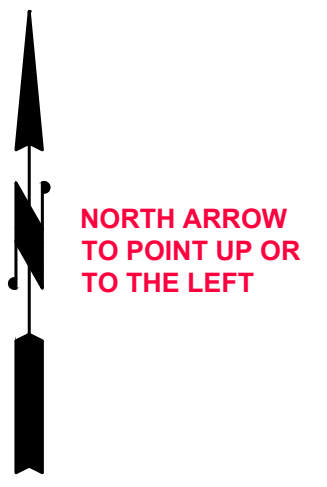


<b>COMPANY LOGO</b> INCLUDING ADDRESS AND TELEPHONE NUMBER		DATE APPROVED PRINCIPAL APPROVAL DESIGN DRAWN CHECKED JOB NO. 12345	NO. BY DATE DESCRIPTION REVISIONS
<b>LAKE MERIDIAN WATER DISTRICT</b>		DES.F.D.BK. NO. PG.	CST.F.D.BK. NO. PG.
<b>WATER MAIN EXTENSION PROJECT NAME PER DE AGREEMENT WATER MAIN PLAN</b>		SCALE HORIZ: 1"=20' VERT:	
BASE MAP R8		SHEET 1 OF 3	
DRAWING R8.OXX			

L:\Lake Meridian WD\District Documents and Standards\DE Docs\Sample Water Plan\Commercial\R8.045.dwg, 6/14/2021 1:31 PM, MADISON MCCROSSKY

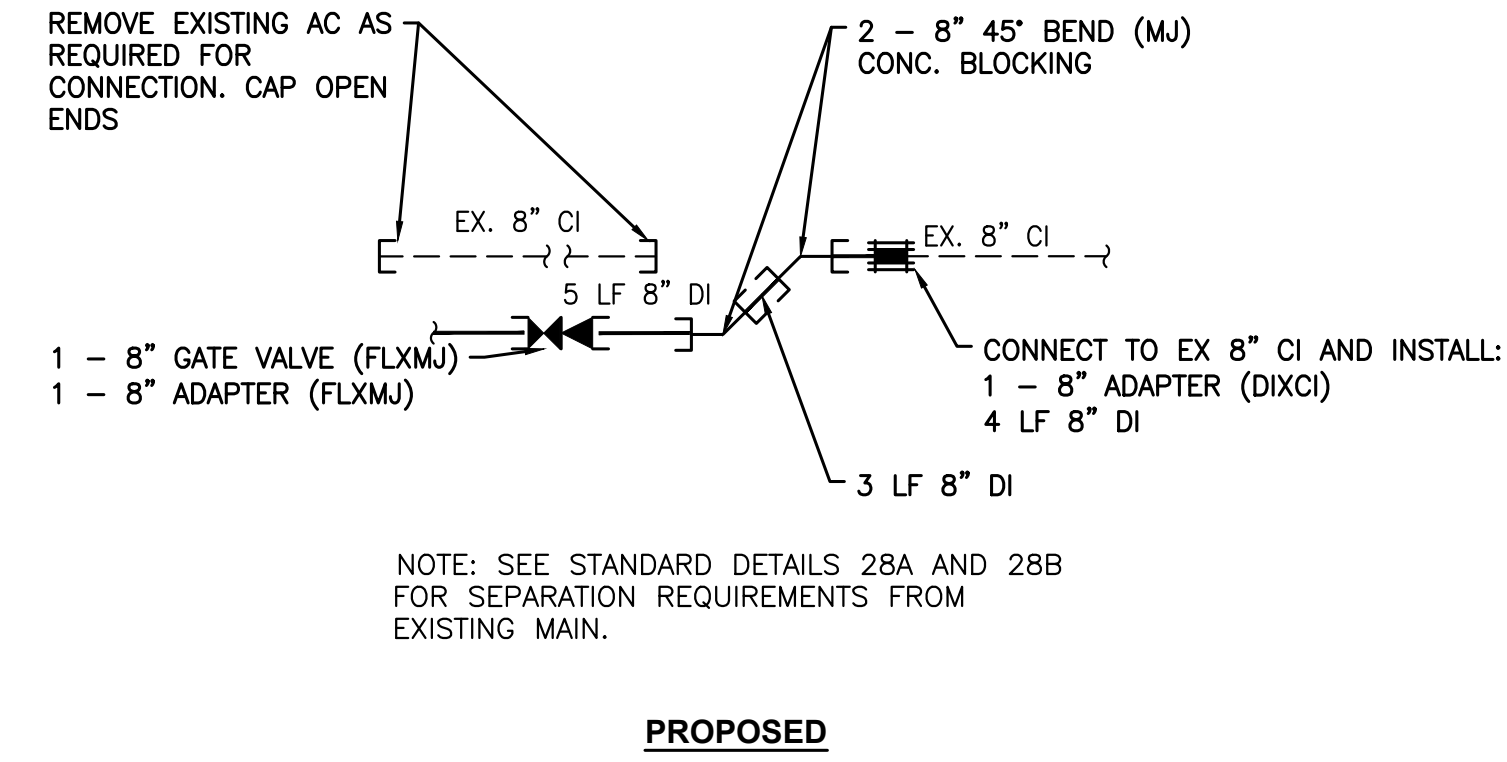


XX SEC-TWN-RGE



EXISTING

1 CUT IN CONNECTION DETAIL  
SCALE: NOT TO SCALE



PROPOSED

2 CUT IN CONNECTION DETAIL  
SCALE: NOT TO SCALE

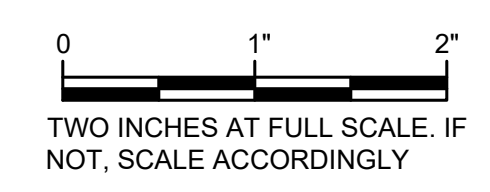
PROFESSIONAL ENGINEER SEAL SIGNED & DATED

DATE APPROVED	ABC
PRINCIPAL APPROVAL	ABC
DESIGN	ABC
DRAWN	ABC
CHECKED	ABC
JOB NO.	12345

COMPANY LOGO INCLUDING ADDRESS AND TELEPHONE NUMBER		DES.F.D.BK. NO. PG.
		CST.F.D.BK. NO. PG.
SCALE HORIZ: 1"=20'		

**LAKE MERIDIAN WATER DISTRICT**  
WATER MAIN EXTENSION  
PROJECT NAME PER DE AGREEMENT  
WATER MAIN CONNECTION DETAILS

APPROVED CONSTRUCTION DRAWINGS  
DATE \_\_\_\_\_



BASE MAP	R8
SHEET	2 OF 3
DRAWING	R8.0XX

L:\Lake Meridian WD\District Documents and Standards\DE Docs\Sample Water Plan\Commercial\R8.045.dwg, 6/14/2021 1:29 PM, MADISON MCCROSKY